



2013 OUTBACK

MODEL	SELECT NEW OR REVISED FEATURES (see specifications for complete list)
<p>All models</p>	<ul style="list-style-type: none"> • Brake override system • 2.5i engine receives increased horsepower: 173 and increased torque: 174 • New gauge cluster • Redesigned bumper, grille, headlight and fog lights • Adjustable roof rail system (2 positions) • New aluminum alloy wheel design • Improved CVT (where applicable) • Improved fuel economy for 2.5i models • New colour: Venetian Red Pearl • Discontinued colour: Ruby Red Pearl
<p>Outback 2.5i Convenience</p> 	<ul style="list-style-type: none"> • New premium cloth seats • Bluetooth® mobile phone connectivity with voice activation • Discontinued: blueconnect® Bluetooth® mobile phone connectivity (voice activation) <p>Touring Package</p> <ul style="list-style-type: none"> • No changes <p>Limited Package</p> <ul style="list-style-type: none"> • New 17-inch aluminum alloy with machined finish wheel design • XM® Satellite Radio • Voice activated, in-dash GPS navigation system with 7-inch high-resolution touch screen, AM/FM/CD/MP3/WMA/DivX®, WMV, MP4, SMS text messaging capability, XM® NAVTraffic*, Bluetooth® mobile phone connectivity with voice activation, Bluetooth® streaming audio, 3.5mm auxiliary jack, USB and rear-view camera • Harman Kardon® 9-speaker system including subwoofer and amplifier • Auto-dimming rearview mirror with Homelink® • New wood grain accent • Electro-luminescent gauges with colour multi-information display • Discontinued: Pioneer® AVIC audio system, Pioneer® 6-speaker system, SIRIUS® Satellite Radio, Auto dimming mirror with compass
<p>Outback 3.6R</p> 	<p>Limited Package</p> <ul style="list-style-type: none"> • New 17-inch aluminum alloy with machined finish wheel design • XM® Satellite Radio • Voice activated, in-dash GPS navigation system with 7-inch high-resolution touch screen, AM/FM/CD/MP3/WMA/DivX®, WMV, MP4, SMS text messaging capability, XM® NAVTraffic*, Bluetooth® mobile phone connectivity with voice activation, Bluetooth® streaming audio, 3.5mm auxiliary jack, USB and rear-view camera • Harman Kardon® 9-speaker system including subwoofer and amplifier • Auto-dimming rearview mirror with Homelink® • New wood grain accent • Electro-luminescent gauges with colour multi-information display • EyeSight™ option • Discontinued: Pioneer® AVIC audio system, Pioneer® 6-speaker system, SIRIUS® Satellite Radio, Auto dimming mirror with compass

Product details based on the latest information available at the time of publication and are subject to change without notice or incurring obligation. © 2012 Subaru Canada, Inc.

* Subscription required.

2013 OUTBACK



3.6R Limited Package with EyeSight™ option shown

- 1 New for 2013, the roof rails have been redesigned to allow for 2 position settings making it easy to adjust for larger items such as canoes and kayaks.
- 2 With many enhancements to this year's Outback, the front grille has been updated to represent sportiness and overall increased presence. By adopting the wing insert from 2012 Impreza, this helps identify the exterior characteristics of the Subaru brand.
- 3 A new rim design provides a more pronounced style for all Outback models, while 2.5i Limited Package, 3.6R Limited and EyeSight™ option receive a machined finish rim to add a distinguished look.
- 4 For 2013, Outback receives a face lift updating bumper, headlight, fog lights, and grille all contributing to a more redefined, go anywhere Outback.
- 5 With second generation CVT being introduced, and a redesigned 6-speed manual transmission, the 2013 Outback benefits in many ways. But the most important one is fuel economy. Models equipped with the Lineartronic® CVT will see fuel efficiency of 6.5 L/100km on highway and 8.6 L/100km in the city. Models equipped with a 6-speed manual transmission see fuel efficiency of 7.0 L/100km on highway and 9.8 L/100km in the city.

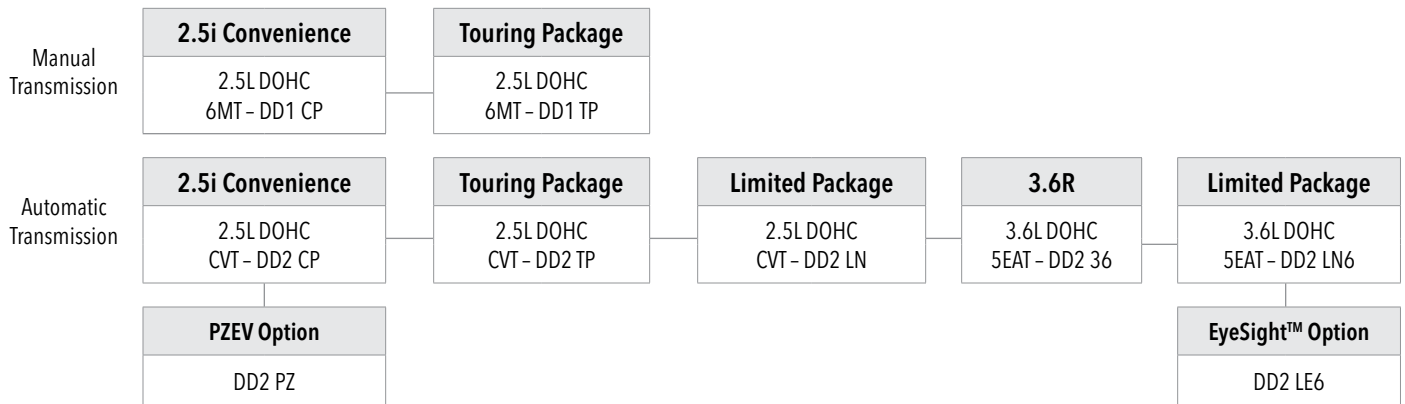


- 1 The Outback offers right-sized versatility with more cargo volume than Venza and the Accord Crosstour.
- 2 The Outback is perfect for long trips or when accommodating four adults. All Outback models feature a rear reclining seat for added comfort.
- 3 An electro-luminescent gauge with colour multi-information display is available on 2.5i Limited Package, 3.6R Limited or EyeSight™ option models. The 3.5-inch colour display indicates driving functions, information, settings, warnings, as well as EyeSight™ images.
- 4 2.5i Limited and 3.6R Limited models feature a new audio system. This multimedia system features in-dash voice activated navigation, SMS text messaging capability, XM® NavTraffic*, Bluetooth® mobile phone connectivity with voice-activation and rear-view camera, to just name a few.

Product details based on the latest information available at the time of publication and are subject to change without notice or incurring obligation. © 2012, Subaru Canada, Inc.

* Subscription required.

2013 OUTBACK



Outback 2.5i Convenience

Horizontally opposed, 4-cylinder, 2.5L SUBARU BOXER engine with Active Valve Control System
 173 horsepower and 174 lb-ft of torque
 6-speed Manual Transmission (6MT) or optional Lineartronic® CVT (Continuously Variable Transmission) with paddle shift controls
 Subaru symmetrical full-time All-Wheel Drive
 Vehicle Dynamics Control system and Traction Control System
 Anti-lock Braking System with Electronic Brake-force Distribution (EBD) and Brake Assist
 Front brakes: Ventilated discs (294 x 24 mm), dual-piston calipers
 Rear brakes: Solid discs (286 x 10 mm), single-piston calipers
 Electronic parking brake and driver-selectable Hill Holder system with memory
 Driver and front passenger front and side-impact airbags; side curtain airbags with rollover sensor
 Whiplash-reducing front seats with height-adjustable head restraints
 17-inch aluminum alloy wheels with Continental ContiProContact™ M+S All-Season tires
 Splash guards
 Brake override system
 Power-adjustable, foldable, heated body-colour door mirrors

Fully automatic headlights
 Multi-reflector halogen fog lights
 Raised-profile roof rails with integrated/adjustable swing-in-place crossbars
 Privacy tinted glass on rear doors and cargo area
 Air conditioning with air filtration
 AM/FM/CD/MP3/WMA audio system with 4 speakers, auxiliary audio input, USB and steering wheel-integrated controls
 MediaHub for iPod®/USB audio integration
 Bluetooth® mobile phone connectivity with voice activation
 Bluetooth® streaming audio
 Tilt-adjustable, telescopic steering wheel with integrated cruise control
 Low oil and low windshield washer fluid warning indicators
 Power windows (driver's auto down)
 Heated front seats; 10-way power-adjustable driver's seat including lumbar support
 60/40-split, flat-folding and reclining rear seats
 Premium cloth upholstery
 Retractable cargo cover
 Outback embroidered floor mats

Touring Package:

Available on Outback 2.5i Convenience

Windshield wiper de-icer
 Power tilting and sliding glass sunroof
 Leather-wrapped steering wheel and gear selector
 Power windows (driver's auto up/down)
 Cargo area tray
 6-speaker system
 Automatic climate control, dual-zone with synchronize button

PZEV OPTION:

Available on Outback 2.5i Convenience (Lineartronic® CVT only)

PZEV emissions equipment
 PZEV rear badge
 PZEV embroidered floor mats

Product details based on the latest information available at the time of publication and are subject to change without notice or incurring obligation. © 2012 Subaru Canada, Inc.

2013 OUTBACK

Limited Package: Available on Outback 2.5i Convenience (Lineartronic® CVT) and 3.6R (5EAT)

17-inch aluminum alloy machined finish wheels with Continental ContiProContact™ M+S All-Season tires
 Power tilting and sliding glass sunroof
 Windshield wiper de-icer
 XM® Satellite Radio installed (free 3-month trial subscription included)
 MediaHub for iPod®/USB audio integration
 Voice activated, in-dash GPS navigation system with 7-inch high-resolution touch screen, AM/FM/CD/MP3/WMA/DivX®, WMV, MP4, SMS text messaging capability, XM® NAVTraffic*, 3.5mm auxiliary jack, USB and rear-view camera
 Harman Kardon® 9-speaker system including subwoofer and amplifier

Auto-dimming rearview mirror with Homelink®
 Power windows (driver's auto up/down)
 Leather-wrapped steering wheel and shift knob
 Electro-luminescent gauges with colour multi-information display
 Automatic climate control, dual-zone with synchronize button
 4-way power-adjustable front passenger seat
 Woodgrain interior trim
 Brushed aluminum front door sills
 Cargo area tray
 Leather seating surfaces

Outback 3.6R

Horizontally opposed, 6-cylinder, 3.6L SUBARU BOXER engine with Dual Active Valve Control System
 256 horsepower and 247 lb-ft of torque
 5-speed Electronic Direct Control Automatic Transmission with Manual Mode (5EAT), blipping control and paddle shift controls
 Subaru symmetrical full-time All-Wheel Drive
 Vehicle Dynamics Control system and Traction Control System
 Anti-lock Braking System with Electronic Brake-force Distribution (EBD) and Brake Assist
 Front brakes: Ventilated discs (316 x 30 mm), dual-piston calipers
 Rear brakes: Ventilated discs (290 x 18 mm), single-piston calipers
 Electronic parking brake and driver-selectable Hill Holder system with memory
 Driver and front passenger front and side-impact airbags; side curtain airbags with rollover sensor
 Whiplash-reducing front seats with height-adjustable head restraints
 17-inch aluminum alloy wheels with Continental ContiProContact™ M+S All-Season tires
 Splash guards
 Power-adjustable, foldable, heated body-colour door mirrors
 Multi-reflector halogen fog lights
 Raised-profile roof rails with integrated/adjustable swing-in-place crossbars
 Automatic climate control, dual-zone with synchronize button

Privacy tinted glass on rear doors and cargo area
 Twin muffler exhaust
 Windshield wiper de-icer
 Fully automatic headlights
 Power tilting and sliding glass sunroof
 AM/FM/CD/MP3/WMA audio system with 6 speakers, auxiliary audio input, USB and steering wheel-integrated controls
 Bluetooth® mobile phone connectivity with voice activation
Bluetooth® streaming audio
 MediaHub for iPod®/USB audio integration
 Tilt-adjustable, telescopic steering wheel with integrated cruise control
 Leather-wrapped steering wheel
 Low oil and low windshield washer fluid warning indicators
 Power windows (driver's auto up/down)
 Heated front seats; 10-way power-adjustable driver's seat including lumbar support
 60/40-split, flat-folding and reclining rear seats
 Cargo area tray and retractable cargo cover
 Premium cloth upholstery

EyeSight™ OPTION: Available on Outback 3.6R Limited Package

Pre-collision braking	Lane departure warning
Pre-collision brake assist	Lane sway warning
Pre-collision throttle management	Lead vehicle start alert
Adaptive cruise control	

Product details based on the latest information available at the time of publication and are subject to change without notice or incurring obligation. © 2012 Subaru Canada, Inc.

* Subscription required.

2013 OUTBACK

	2.5i Convenience	3.6R
ENGINE		
Engine: 2.5L Dual Overhead Cam (DOHC), 16-valve, horizontally opposed, 4-cylinder SUBARU BOXER engine, Electronic Throttle Control and Active Valve Control System	●	–
Power: 173 hp @ 5600 rpm Torque: 174 lb-ft @ 4100 rpm		
Engine: 3.6L Dual Overhead Cam (DOHC), 24-valve, horizontally opposed, 6-cylinder SUBARU BOXER engine, Electronic Throttle Control and Dual Active Valve Control System	–	●
Power: 256 hp @ 6000 rpm Torque: 247 lb-ft @ 4400 rpm		
Emissions: Meets Low Emission Vehicle (LEV2) standards	●	●
Emissions: Meets Partial Zero Emission Vehicle (PZEV) standards	○*	–
Engine block: Open deck design, aluminum	●	●
Engine mounts: Liquid-filled rubber	●	●
Engine top cover	–	●
Fuel injection: Sequential multiport	●	●
Ignition system: Direct	●	●
PZEV emissions equipment	○*	–
Spark plugs: Iridium-tipped	●	●
TRANSMISSION AND DRIVETRAIN		
6-speed Manual Transmission (6MT)	●	–
Flexible flywheel	●	–
Fully synchronized, including reverse	●	–
Hydraulically operated, dry single-plate disc clutch	●	–
Starter interlock system (clutch pedal controlled)	●	–
Subaru symmetrical full-time All-Wheel Drive system: Viscous-coupling limited-slip centre differential	●	–
Lineartronic® CVT (Continuously Variable Transmission) with manual mode	○/LP	–
5-speed Electronic Direct Control Automatic Transmission with Manual Mode (5EAT)	–	●
Paddle shift controls	○/LP	●
Straight shifter with shift position indicator on instrument panel	○/LP	●
Lock-up torque converter	○/LP	●
Transmission shift lock	○/LP	●
Blipping control	–	●
Subaru symmetrical full-time All-Wheel Drive system: Electronically controlled multi-plate transfer clutch	○/LP	–
Subaru symmetrical full-time All-Wheel Drive system: Variable Torque Distribution (VTD)	–	●
Differential (rear): Standard open type	●	●

Product details based on the latest information available at the time of publication and are subject to change without notice or incurring obligation. © 2012 Subaru Canada, Inc.

2013 OUTBACK

	2.5i Convenience	3.6R
CHASSIS		
Brake override system	●	●
Brakes: Power-assisted, dual-diagonal system	●	●
Brakes: ABS, 4-channel/4-sensor/4-wheel	●	●
Brakes: Electronic Brake-force Distribution (EBD)	●	●
Brakes: Brake Assist	●	●
Brakes: Electronic parking brake	●	●
Brakes (front): Ventilated discs (294 x 24 mm), dual-piston calipers	●	—
Brakes (front): Ventilated discs (316 x 30 mm), dual-piston calipers	—	●
Brakes (rear): Solid discs (286 x 10 mm), single-piston calipers	●	—
Brakes (rear): Ventilated discs (290 x 18 mm), single-piston calipers	—	●
Hill Holder system: Driver-selectable with memory	●	●
Steering: Engine-speed-sensitive, hydraulic, power rack and pinion	●	●
Structure: Advanced ring-shaped reinforcement frame	●	●
Structure: Dual, side-impact door beams (front and rear)	●	●
Structure: Energy-absorbing crumple zones (front and rear)	●	●
Suspension: 4-wheel fully independent	●	●
Suspension: Stabilizer bar (front and rear)	●	●
Suspension (front): MacPherson strut	●	●
Suspension (rear): Double-wishbone	●	●
SAFETY AND SECURITY		
Airbags (SRS): Driver dual-stage deployment with seat position sensor	●	●
Airbags (SRS): Front passenger dual-stage deployment with occupant detection system	●	●
Airbags (SRS): Front seat side-impact	●	●
Airbags (SRS): Side curtain with rollover sensor	●	●
Assist grips: Outboard seating positions	●	●
Brake pedal: Collapsible	●	●
Child safety: Rear door locking system	●	●
Child safety: Rear seat ISO-FIX/LATCH anchor system	●	●
Driver's footrest: Impact-absorbing	●	●
Head restraints (front): Height-adjustable	●	●
Head restraints (rear): Removable, height-adjustable	●	●
Seats (front): Whiplash-reducing	●	●
Seatbelts (front): 3-point with pretensioners and load limiters (Driver - ELR / Passenger - ALR)	●	●
Seatbelts (front): Height-adjustable shoulder belt anchors	●	●
Seatbelts (front): Engagement indicator and warning chime	●	●
Seatbelts (rear): 3-point, all seating positions (ALR)	●	●
Seatbelts (rear): Integrated shoulder belt anchors	●	●
Security: Anti-theft system	●	●
Security: Engine immobilizer system	●	●
Security: Keyless entry system with panic alarm (separate door and cargo access controls)	●	●

Product details based on the latest information available at the time of publication and are subject to change without notice or incurring obligation. © 2012 Subaru Canada, Inc.

2013 OUTBACK

	2.5i Convenience	3.6R
SAFETY AND SECURITY <i>(continued)</i>		
Steering column: Collapsible	●	●
Traction Control System	●	●
Vehicle Dynamics Control system with lateral-g and yaw-rate sensor	●	●
EXTERIOR FEATURES		
Badging (rear): PZEV	○*	—
Badging (rear): Symmetrical AWD	●	●
Badging (rear): 3.6R	—	●
Body: Anti-corrosion treatment	●	●
Body: Dual-sided galvanized steel	●	●
Body: Rocker panels, lower bumpers and lower cladding (black)	●	●
Cargo access: Liftgate	●	●
Door mirrors: Power-adjustable, foldable and heated (body colour)	●	●
Door handles: Body colour	●	●
Door sill: Brushed aluminum (front doors)	LP	LP
Exhaust: Single muffler, single outlet tip (hidden type)	●	—
Exhaust: Twin mufflers, single outlet tips (hidden type)	—	●
Fog lights: Multi-reflector halogen	●	●
Grille: Chrome and silver with Six Star cluster	●	●
Headlights: Fully automatic	●	●
Headlights: Daytime Running Lights (DRL)	●	●
Headlights: Contoured multi-reflector halogen (high beam)	●	●
Headlights: Projector beam halogen (low beam)	●	●
Hood: Dual-sided galvanized steel with gas strut support	●	●
Sunroof: Glass, power tilting and sliding with sunshade	TP/LP	●
Roof rack: Raised-profile roof rails, integrated/adjustable swing-in-place crossbars	●	●
Splash guards	●	●
Spoiler: Roofline, integrated brake light	●	●
Tire (spare): Compact 145/80 R17 (under cargo area)	●	●
Tires: 225/60 R17 98T Continental ContiProContact™ M+S All-Season	●	●
Wheels: 17" x 7.5" aluminum alloy, 6-spoke design	●	●
Wheels: 17" x 7.5" aluminum alloy, 6-spoke design with machined finish	LP	LP
Windows: Privacy tinted glass (rear doors and cargo area)	●	●
Window (rear): Defogger with timer	●	●
Windshield: Laminated UV protection and tinted	●	●
Windshield: Wiper de-icer (integrated)	TP/LP	●
Wipers (windshield): Variable intermittent with washer	●	●
Wiper (rear window): Intermittent and continuous mode with washer	●	●

Product details based on the latest information available at the time of publication and are subject to change without notice or incurring obligation. © 2012 Subaru Canada, Inc.

● Standard
— Not Available

TP Standard with Touring Package
LP Standard with Limited Package

○ Optional
* Optional on Convenience model only
1 Also available as an accessory

2013 OUTBACK

	2.5i Convenience	3.6R
SEATING AND TRIM		
Accents/trim: Aluminum finish	●	●
Accents/trim: Woodgrain	LP	LP
Floor mats: Outback embroidered	●	●
Floor mats: PZEV embroidered	○*	—
Interior: Premium cloth upholstery	●	●
Interior: Perforated leather seating surfaces	LP	LP
Gear selector: Soft-grip	●	—
Gear selector: Leather-wrapped	TP/LP	●
Seat (driver's): 10-way power-adjustable, including power lumbar support	●	●
Seat (front): Passenger, 4-way manually adjustable	●	●
Seat (front): Passenger, 4-way power-adjustable	LP	LP
Seats (front): Heated with high/low level settings	●	●
Seats (front): Reclining bucket	●	●
Seats (rear): Contoured bench	●	●
Seats (rear): 60/40-split, flat-folding	●	●
Seats (rear): Reclining	●	●
Seats (rear): Folding centre armrest	●	●
Steering wheel: Soft-grip	●	—
Steering wheel: Leather-wrapped	TP/LP	●
AUDIO AND TECHNOLOGY		
Audio system: AM/FM/CD/MP3/WMA	●	●
Antenna: Roof mounted	LP	LP
Antenna: In-glass integrated	●	●
Audio controls: Illuminated, steering wheel integrated	●	●
Auxiliary input: Audio source in armrest console	●	●
Bluetooth® mobile phone connectivity with voice activation	●	●
Bluetooth® streaming audio	●	●
MediaHub: iPod®/USB audio integration 1	●	●
Voice activated, in-dash GPS navigation system with 7-inch high-resolution touch screen, AM/FM/CD/MP3/WMA/DivX®, WMV, MP4, SMS text messaging capability, XM® NAVTraffic*, 3.5mm auxiliary jack, USB and rear-view camera	LP	LP
Satellite radio: XM® pre-wired (dealer accessory required)	●	●
Satellite radio: XM® Satellite Radio installed (free 3-month trial subscription included)	LP	LP
Speakers: 4-speaker system	●	—
Speakers: 6-speaker system	TP	●
Speakers: Harman Kardon® 9-speaker system including subwoofer and amplifier	LP	LP

Product details based on the latest information available at the time of publication and are subject to change without notice or incurring obligation. © 2012 Subaru Canada, Inc.

* Subscription required.

2013 OUTBACK

	2.5i Convenience	3.6R
COMFORT AND CONVENIENCE		
Armrest (front): With console storage	●	●
Climate control: Air conditioning with air filtration	●	●
Climate control: Automatic, dual-zone with synchronize button	TP/LP	●
Climate control: Rear-seat heating / ventilation / air conditioning ducts	●	●
Cruise control: Steering wheel integrated	●	●
Cup holders (front): Console integrated (2)	●	●
Cup holders (rear): Armrest integrated (2)	●	●
EyeSight™: Pre-collision braking, pre-collision brake assist, pre-collision throttle management, adaptive cruise control, lane departure warning, lane sway warning, lead vehicle start alert	–	LP (option)
Glove box: Lockable and illuminated	●	●
Ignition key ring: Illuminated	●	●
Light: Front door courtesy lights	●	●
Light: Interior dome with off delay	●	●
Light: Map spotlights	●	●
Power outlet: 12V in armrest console and in dash	●	●
Rearview mirror: Auto-dimming with Homelink® 1	LP	LP
Remote starter: Pre-wired (accessory kit required) (5EAT and CVT only)	●	●
Steering wheel: Tilt-adjustable, telescopic	●	●
Storage: Door compartments	●	●
Storage: Passenger seatback pocket	●	●
Storage: Overhead compartment	●	●
Visor: Dual, with extensions and illuminated mirrors	●	●
Windows (power): Driver's window auto down	●	–
Windows (power): Driver's window auto up/down	TP/LP	●
Windows (power): Illuminated switches, driver's side	●	–
Windows (power): Illuminated switches, all seating positions	TP/LP	●

Product details based on the latest information available at the time of publication and are subject to change without notice or incurring obligation. © 2012 Subaru Canada, Inc.

● Standard
– Not Available

TP Standard with Touring Package
LP Standard with Limited Package

○ Optional
* Optional on Convenience model only
1 Also available as an accessory

2013 OUTBACK

	2.5i Convenience	3.6R
INSTRUMENTS		
Gauges: Analog with red illuminated needles	●	●
Gauges: Electro-luminescent with colour multi-information display	LP	LP
Gauges: Full needle sweep on start-up	●	●
Gauges: Analog display	●	●
Gauges: Sport design with metallic trim	●	●
Information display: Clock, ambient temperature, driving range, fuel economy (average and real time)	●	●
Instrument panel: Adjustable dash illumination	●	●
Instrument panel: Coolant temperature gauge	LP	●
Instrument panel: ECO gauge	●	●
Instrument panel: Fuel gauge with low fuel warning light and fuel door location indicator	●	●
Instrument panel: Headlights and fog lights "on" indication	●	●
Instrument panel: LCD display with gear position indicator, dual trip odometers, door ajar indicator, cruise set display	●	●
Instrument panel: Low oil level warning light indicator	●	●
Instrument panel: Low windshield washer fluid warning light indicator	●	●
Speedometer: Electronically controlled analog	●	●
Tachometer	●	●

CARGO AREA		
Cargo cover: Retractable	●	●
Cargo tie-down hooks, chrome (4)	●	●
Cargo tray / protective mat 1	TP/LP	●
Light: Cargo area	●	●
Power outlet: 12V	●	●
Storage: Sub-floor compartment	●	●
Utility bag hooks (2)	●	●

Measurements

FUEL ECONOMY		
Manual transmission (City/Hwy) (L/100 km)	9.8 / 7.0	—
Manual transmission (City/Hwy) (Imperial MPG)	29 / 40	—
Automatic transmission (City/Hwy) (L/100 km)	8.6 / 6.5	11.8 / 8.2
Automatic transmission (City/Hwy) (Imperial MPG)	33 / 43	24 / 34
Recommended minimum octane (AKI)	87	87
Fuel tank capacity (L)	70	70

GENERAL WEIGHTS		
Curb weight: Manual transmission (kg)	1554	—
Curb weight: Automatic transmission (kg)	1619	1656
Gross Vehicle Weight Rating (GVWR) (kg)	2080	2130

2013 OUTBACK

	2.5i Convenience	3.6R
TOWING CAPACITY ([†] Please review Owner's Manual for details)		
Maximum weight (kg) with trailer brakes [†]	1224	1360
Maximum tongue weight (kg)	91	91
EXTERIOR		
Length (mm)	4800	4800
Width (mm) without mirrors	1820	1820
Width (mm) with mirrors	2050	2050
Height (mm) with roof rails	1670	1670
Roof rack: Max load (kg)	68	68
Wheelbase (mm)	2740	2740
Track: Front (mm)	1550	1550
Track: Rear (mm)	1570	1570
Minimum ground clearance (at curb weight) (mm)	220	220
Steering: Turns (lock-to-lock)	3.2	3.2
Steering: Minimum Turning circle radius (curb-to-curb) (m)	5.6	5.6
Drag coefficient (cd)	0.37	0.37
INTERIOR		
Headroom: Front (mm)	1036	982
Headroom: Front (with sunroof) (mm)	982	982
Headroom: Rear (mm)	999	999
Legroom: Front (mm)	1091	1091
Legroom: Rear (mm) (minimum)	960	960
Shoulder room: Front (mm)	1430	1430
Shoulder room: Rear (mm)	1426	1426
Hip room: Front (mm)	1384	1384
Hip room: Rear (mm)	1370	1370
EPA passenger volume (L)	2984	2899
EPA passenger volume including cargo (L)	3956	3771
EPA passenger volume including cargo (with sunroof) (L)	3771	3771
CARGO AREA		
Cargo volume (seats up) (L)	857	857
Cargo volume (seats folded flat) (L)	2019	2019
Floor length (seats folded flat) (mm)	1790	1790
Floor length (seats up) (mm)	1045	1045
Height (mm)	830	830
Rear gate opening width at floor (mm)	1083	1083
Tailgate to ground height (mm)	756	756
Width between wheel wells (mm)	1090	1090

Product details based on the latest information available at the time of publication and are subject to change without notice or incurring obligation. © 2012 Subaru Canada, Inc.

● Standard
– Not Available

TP Standard with Touring Package
LP Standard with Limited Package

○ Optional
* Optional on Convenience model only
1 Also available as an accessory

2013 OUTBACK

	2.5i Convenience	3.6R
GEAR RATIOS		
Manual Transmission (6MT):		
First Gear	3.454	–
Second Gear	1.947	–
Third Gear	1.296	–
Fourth Gear	0.972	–
Fifth Gear	0.825	–
Sixth Gear	0.695	–
Reverse Gear	3.636	–
Final Drive Ratio	4.444	–
Lineartronic® CVT (Continuously Variable Transmission) - simulated manual mode:		
First Gear	3.581	–
Second Gear	2.262	–
Third Gear	1.658	–
Fourth Gear	1.208	–
Fifth Gear	0.885	–
Sixth Gear	0.618	–
Reverse Gear	3.667	–
Final Drive Ratio	3.900	–
Automatic Transmission with Manual Mode (5EAT):		
First Gear	–	3.540
Second Gear	–	2.264
Third Gear	–	1.471
Fourth Gear	–	1.000
Fifth Gear	–	0.834
Reverse Gear	–	2.370
Final Drive Ratio	–	3.083

Product details based on the latest information available at the time of publication and are subject to change without notice or incurring obligation. © 2012 Subaru Canada, Inc.

2013 OUTBACK

EXTERIOR COLOURS



Caramel Bronze Pearl



Crystal Black Silica



Cypress Green Pearl



Deep Indigo Pearl



Graphite Grey Metallic



Ice Silver Metallic

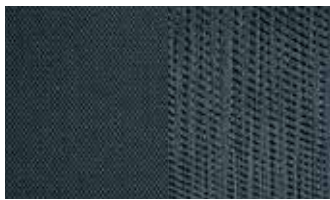


Satin White Pearl



Venetian Red Pearl

UPHOLSTERY



Black Cloth



Ivory Cloth



Black Leather



Ivory Leather

WHEELS



17-inch Aluminum Alloy,
6-spoke design
(2.5i Convenience Package,
2.5i Touring Package)



17-inch Aluminum Alloy, machined finish
6-spoke design
(2.5i Limited Package,
3.6R Limited Package,
3.6R Limited Package EyeSight™ option)

Product details based on the latest information available at the time of publication and are subject to change without notice or incurring obligation. © 2012 Subaru Canada, Inc.

2013 OUTBACK

VEHICLE PRICING

MODEL	ENGINE	TRANSMISSION	MODEL CODE	MSRP
2.5i Convenience	2.5L DOHC	6MT	DD1 CP	\$28,495
	2.5L DOHC	CVT	DD2 CP	\$29,795
2.5i Convenience with PZEV Option	2.5L DOHC	CVT	DD2 PZ	\$30,495
2.5i Touring Package	2.5L DOHC	6MT	DD1 TP	\$31,095
	2.5L DOHC	CVT	DD2 TP	\$32,395
2.5i Limited Package	2.5L DOHC	CVT	DD2 LN	\$36,295
3.6R	3.6L DOHC	5EAT	DD2 36	\$34,495
3.6R Limited Package	3.6L DOHC	5EAT	DD2 LN6	\$38,495
3.6R Limited Package with EyeSight™ Option	3.6L DOHC	5EAT	DD2 LE6	\$39,995

ALL PRICES ALONG WITH SPECIFICATIONS ARE SUBJECT TO CHANGE WITHOUT NOTICE. THE DEALER MAY SELL BELOW SUGGESTED RETAIL WITHOUT FEAR OF RECRIMINATION FROM SUBARU CANADA, INC. MSRP SHOWN EXCLUDES EXCISE TAX FOR AIR CONDITIONING, INLAND FREIGHT AND PRE-DELIVERY CHARGES. MSRP DOES NOT INCLUDE APPLICABLE TAXES.

COLOUR AVAILABILITY

EXTERIOR COLOUR	COLOUR CODE	2.5i Convenience			3.6R			
			PZEV Option	Touring Package	Limited Package	Limited Package	EyeSight™ Option	
		DD1 CP DD2 CP	DD2 PZ	DD1 TP DD2 TP	DD2 LN	DD2 36	DD2 LN6	DD2 LE6
Caramel Bronze Pearl	1H	80	80	80	20/80	80	20/80	20/80
Crystal Black Silica	4S	20	20	20	20/80	20	20/80	—
Cypress Green Pearl	4T	80	80	80	80	80	80	80
Deep Indigo Pearl	5U	20	20	20	20/80	20	20/80	20/80
Graphite Grey Metallic	3T	20	20	20	20	20	20	20
Ice Silver Metallic	1U	20	20	20	20	20	20	20
Satin White Pearl	7J	20	20	20	20	20	20	20
Venetian Red Pearl	2Q	20	20	20	20/80	20	20/80	20/80
INTERIOR TRIM		Cloth	Cloth	Cloth	Leather	Cloth	Leather	Leather

20 : Black 80 : Ivory

Product details based on the latest information available at the time of publication and are subject to change without notice or incurring obligation. © 2012 Subaru Canada, Inc.